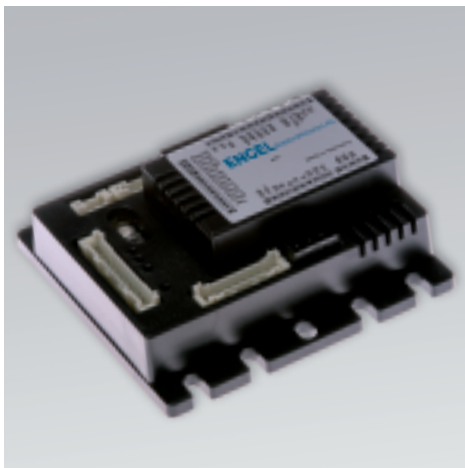


# EDC ENGEL Drive Control

for brushless and brushed DC motors

**High Quality • Customizable • Flexible**



**Your trusted partner for durable drive solutions since 1923**



**ENGEL** ElektroMotoren AG

## ENGEL EDC Drive Control




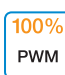




Our drive controllers are decentralised, compact speed, current and positioning controllers for brushless and brushed DC motors with a voltage supply (power) of up to 60 volts. The differences lie in the current strengths and the required functionality. All devices are freely parameterizable and programmable.

The integrated MPU (Motion Process Unit) enables the storage of your own logic and consequently intelligent operation without a superordinate control system.

### EDC-E class

The drive controllers of the E class are available in the combination Hall sensor and incremental encoder interface, or Sin/Cos encoder, the operation of single and multiturn encoders (only SSI, Gray Code) is also possible.

These drive controllers have a modular design and are therefore optionally available with the common field buses such as **CANopen**, **EtherCAT** and **Profinet**.

Type	Suitable for ENGEL motors	Power supply	Electronic supply	Rated voltage 24V <sub>DC</sub> / 48V <sub>DC</sub>	Features			
E20	GNM21...GNM8035 HSM38...HSM7145	9...60V <sub>DC</sub>	9...30V <sub>DC</sub>	30A / 21A				
E25	GNM21 ...GNM80 HSM38...HSM7145 HSM7160*	9...60V <sub>DC</sub>	9...30V <sub>DC</sub>	35A / 26A				
E40	GNM21...GNM5440 HSM38...HSM7130*	9...60V <sub>DC</sub>	9...30V <sub>DC</sub>	10A / 8,5A				
E40-HC	GNM21...GNM5440 HSM38...HSM7130*	9...60V <sub>DC</sub>	9...30V <sub>DC</sub>	12,5A / 12,5A				
E45	GNM21...GNM5440 HSM38...HSM7130*	9...60V <sub>DC</sub>	9...30V <sub>DC</sub>	10A / 8,5A				
E45-HC	GNM21...GNM5440 HSM38...HSM7130*	9...60V <sub>DC</sub>	9...30V <sub>DC</sub>	12,5A / 12,5A				
E50	GNM21...GNM5440 HSM38...HSM7130*	9...60V <sub>DC</sub>	9...30V <sub>DC</sub>	8A				
E50-HC	GNM21...GNM54 HSM38...HSM71xx	9...60V <sub>DC</sub>	9...30V <sub>DC</sub>	13A				
E55	GNM21...GNM5440 HSM38...HSM7130*	9...60V <sub>DC</sub>	9...30V <sub>DC</sub>	10A				
E55-HC	GNM21...GNM54 HSM38...HSM71xx	9...60V <sub>DC</sub>	9...30V <sub>DC</sub>	14A				
E60	GNM21...GNM4125 HSM38...	9...60V <sub>DC</sub>	9...30V <sub>DC</sub>	5A / 4,3A				
E65	GNM21...GNM4125 HSM4615-24 HSM4630-48* HSM38...	9...60V <sub>DC</sub>	9...30V <sub>DC</sub>	5A / 4,3A				

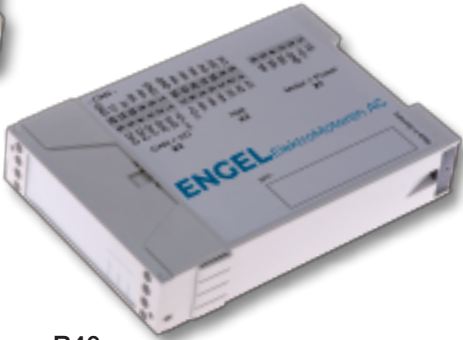
HC = version with heatsink

\*Only applies to 48V<sub>DC</sub> winding version

As an option, it is also possible to make customer-specific modifications to the controllers and/or commission us to carry out the parameterisation.  
A CAN stick is required for on-site parameterisation.



E40



B40



B60

EDC-B class

The B class drive controllers are only equipped with a Hall sensor interface and CANopen as a bus system.  
As a result, they are more cost-effective variants with reduced functionality, which is enough for a lot of applications.

Type	Suitable for ENGEL motors	Power supply	Electronic supply	Rated voltage 24V <sub>DC</sub> / 48V <sub>DC</sub>	Features
B40	GNM21...GNM5440 HSM38...HSM7130*	9...60V <sub>DC</sub>	9...30V <sub>DC</sub>	10A / 8,5A	<div><div>digital IN</div><div>digital OUT</div></div>
B40-HC	GNM21...GNM5440 HSM38...HSM7130*	9...60V <sub>DC</sub>	9...30V <sub>DC</sub>	12,5A / 12,5A	<div><div>digital IN</div><div>digital OUT</div></div>
B45	GNM21...GNM5440 HSM38...HSM7130*	9...60V <sub>DC</sub>	9...30V <sub>DC</sub>	10A / 8,5A	<div><div>100% PWM</div><div>digital IN</div><div>digital OUT</div><div>analog IN</div></div>
B45-HC	GNM21...GNM5440 HSM38...HSM7130*	9...60V <sub>DC</sub>	9...30V <sub>DC</sub>	12,5A / 12,5A	<div><div>100% PWM</div><div>digital IN</div><div>digital OUT</div><div>analog IN</div></div>
B60	GNM21...GNM4125 HSM4615-24 HSM4630-48* HSM38...	9...60V <sub>DC</sub>	9...30V <sub>DC</sub>	5A / 4,3A	<div><div>digital IN</div><div>digital OUT</div><div>analog IN</div></div>
B65	GNM21...GNM4125 HSM4615-24 HSM4630-48* HSM38...	9...60V <sub>DC</sub>	9...30V <sub>DC</sub>	5A / 4,3A	<div><div>100% PWM</div><div>digital IN</div><div>digital OUT</div><div>analog IN</div></div>

HC = version with heatsink  
\*Only applies to 48V<sub>DC</sub> winding version

We are glad to answer your questions promptly and are always available  
for a personal consultation. Contact us via email at  
kontakt@engel-elektromotoren.de or by telephone under +49 (6123) 994-400.



This flyer only presents an excerpt from our product range. Further information and the data sheets for the complete product range can be found at [www.engel-elektromotoren.de](http://www.engel-elektromotoren.de)

Alternatively please use our personal consultation service.



## We will find the most optimum drive for your requirements.

We offer a wide range of standard versions of brushed and brushless electric motors, gearboxes and drive controllers, as well as technical advice on special designs. Our technically experienced employees will develop the best possible drive solution. While always with a focussing on achieving the best possible savings potential in your application.



**ENGEL**  
**ElektroMotoren AG**

Am Klingenweg 7  
65396 Walluf

Fon +49 (0) 6123 994 400

Fax +49 (0) 6123 994 410

[kontakt@engel-elektromotoren.de](mailto:kontakt@engel-elektromotoren.de)  
[www.engel-elektromotoren.de](http://www.engel-elektromotoren.de)

## International representatives

### China

Delu Mech. & Elec. Equipment Co., Ltd.  
Hua Yi Fu A-2827  
Shaoshan South Road 123  
410007 Changsha  
P.R. China

Fon +86 731 85 19 55 81  
Fax +86 731 85 19 55 80  
[info@delu.biz](mailto:info@delu.biz)  
[www.delu.biz](http://www.delu.biz)

### France

R.L.M.  
39 Rue Francine Fromont  
69120 Vaulx en Velin  
France

Fon +33 4 72 89 01 80  
Fax +33 4 78 67 13 57  
[rlm.motorisation@gmail.com](mailto:rlm.motorisation@gmail.com)  
[www.rlm-motorisations.com](http://www.rlm-motorisations.com)

### Netherlands

Eltrex Motion B.V.  
Minervum 7139  
4817 ZN Breda  
The Netherlands

Fon +31 76 789 00 30  
Fax +31 76 789 00 39  
[info@eltrex-motion.com](mailto:info@eltrex-motion.com)  
[www.eltrex-motion.com](http://www.eltrex-motion.com)

### Belgium

Eltrex Motion B.V.  
Bisschoppenhoflaan 225  
2100 Antwerpen  
Belgium

Fon +32 3 326 40 00  
Fax +32 3 326 31 17  
[info@eltrex-motion.com](mailto:info@eltrex-motion.com)  
[www.eltrex-motion.com](http://www.eltrex-motion.com)

### Sweden

Nordela AB  
Malgomajvägen 1-3  
120 60 Årsta  
Sweden

Fon +46 8 18 81 85  
Fax +46 8 18 66 00  
[info@nordela.se](mailto:info@nordela.se)  
[www.nordela.se](http://www.nordela.se)